



Mulcher suited for mulching grass and branches up to 40 mm of diameter.

Suited for mulching wooden material such as pruning and branches, ideal for vineyards, gardens, swimming pools, outdoor sports facilities...

Great capacity of absorption for the collect of leaves and all kinds of garbages (bottles, papers, plastic bottles, bags, etc.). Mulcher equipped with a rotor with forged hammers guaranteed against breakage and with a hopper of unloading.

CHARACTERISTICS

- Non-wear steel-plate chassis, thickness 6 mm.

► Hammers guaranteed against breakage.

► Tubular rotor of Ø 400 mm.

► Side belt transmission.

► GIROSTOP system into the bolt of the hammer.

► Basket of storage.

► Hydraulic unload.

► PTO 540 rpm.

► Skid shoes.

► Height-adjustable rear roller.

► Model built under EC Normative.

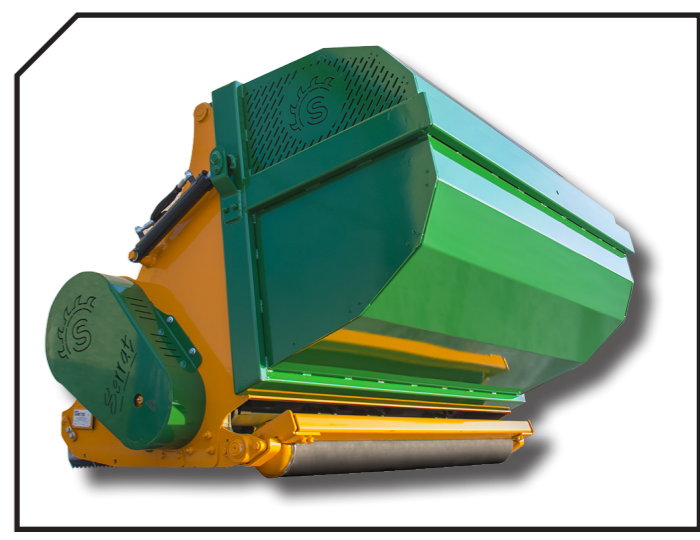
► Safety indicators visible to personnel.





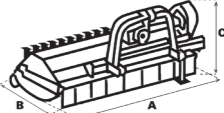



Storage



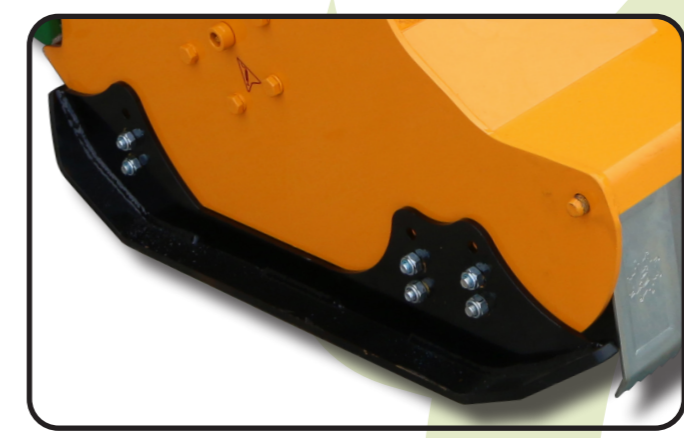
Rear height-adjustable roller



MODEL				CAPACITY HOPPER		Nº BELTS TYPE				
							A	B	C	
	mm	KW-HP			KG		mm-in	mm-in	mm-in	
T-1400	1400	29 - 40 59 - 80	12	0,79 m³	620	3 XPC	1650-65"	1650-65"	1180-46"	540
T-1600	1600	37 - 50 59 - 80	12	0,91 m³	665	3 XPC	1850-73"	1650-65"	1180-46"	540
T-1800	1800	44 - 60 59 - 80	16	1,00 m³	720	3 XPC	2050-81"	1650-65"	1180-46"	540
T-2000	2000	48 - 65 59 - 80	16	1,14 m³	770	3 XPC	2250-89"	1650-65"	1180-46"	540

OPTIONS

► Freewheel



► Long skid shoes

